



# Seamless Data Integration by Generative AI

Leading Insurance Provider

**22%**  
Increase in customer satisfaction

**29%**  
Reduction in fraud

**37%**  
Reduction in claim processing time

## Client Profile

Client is a leading insurance provider in Asia catering to healthcare, travel and accident coverage. Maintaining highest claim ratio, client wants to be at top of the industry, aim to incorporate emerging data sources and gain a holistic view of patient health, provider performance, and healthcare trends.

## Business Context

Insurance companies face a critical data integration challenge due to diverse data sources and formats, hindering their ability to consolidate and integrate data efficiently. Manual processes, data inconsistencies, and compliance risks further impact their operations. Client struggles with time-consuming and error-prone manual data integration processes. The lack of a standardized and automated solution leads to data inconsistencies, delayed in claims processing, and compliance risks. Furthermore, the complexity of the healthcare insurance industry and evolving data sources pose challenges in gaining accurate insights, making informed decisions, and providing seamless customer experiences.

## Challenges

- Time consuming manual data integration leading to error-prone operations, delays, and potential compliance risks
- Existing solution hindering accurate insights, informed decision making, seamless customer experience
- Incorporating emerging data sources like wearable devices, and electronic health records adding complexity to data integration

## Solution

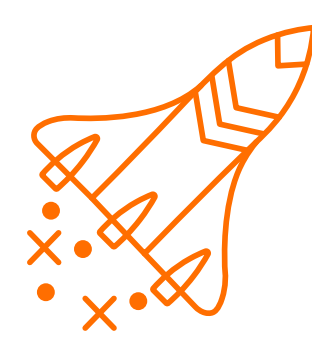
- Automated data extraction and consolidation from multiple sources using Kafka, improving efficiency and reducing errors
- Data standardization and harmonization has been done using Talend, ensuring consistency and compatibility across the organization
- Leveraged Gen AI models TensorFlow and PyTorch to align and integrate disparate data elements, minimizing manual effort

## Technologies Used

TensorFlow, PyTorch, Kafka, Talend



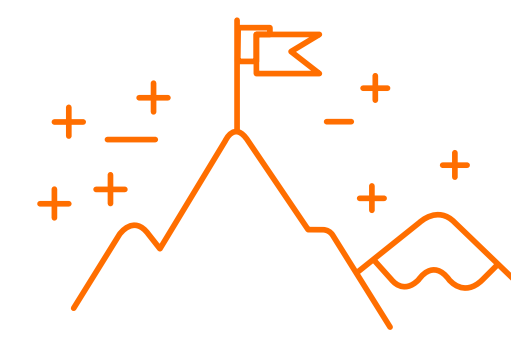
Faster analytics performance



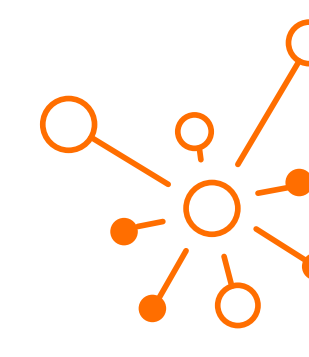
Seamless Experience



Affordable Implementation



Competitive Advantage



Save Days Worth of Effort

## Business Impact

### Streamlined operations:

The automated data integration process reduces manual effort, accelerates data integration, and minimizes errors.

### Improved data quality:

Advanced data cleansing algorithms ensure accurate risk assessment, fraud detection, and reliable decision-making.

### Comprehensive analytics:

Integration of external data sources enables comprehensive analytics, predictive modeling, and personalized care recommendations.

### Effective care management:

Actionable insights empower healthcare professionals to provide effective care management and personalized customer experiences.

### Enhanced decision-making:

Timely and accurate insights enable informed decision-making for risk assessment, care management, and provider performance evaluation.

### Competitive advantage:

Overcoming data complexities and providing superior healthcare coverage positions StarHealth Insurance as a leader in the dynamic healthcare insurance market.

## Why Kanerika

Kanerika Inc. is a premier provider of data-driven software solutions and services that facilitate digital transformation. Specializing in Data Integration, Analytics, AI/ML, and Cloud Management, Kanerika prides itself on its expertise in employing cutting-edge technologies and agile methodologies to ensure exceptional outcomes. With a proven track record across various industries, Kanerika maintains rigorous quality standards, backed by ISO 27701 certification, SOC II and GDPR compliance. As a distinguished partner of Microsoft, AWS, and Informatica, Kanerika's commitment to innovation and strong partnerships positions it at the forefront of empowering businesses for their growth.

LET'S TALK

DOWNLOAD PDF